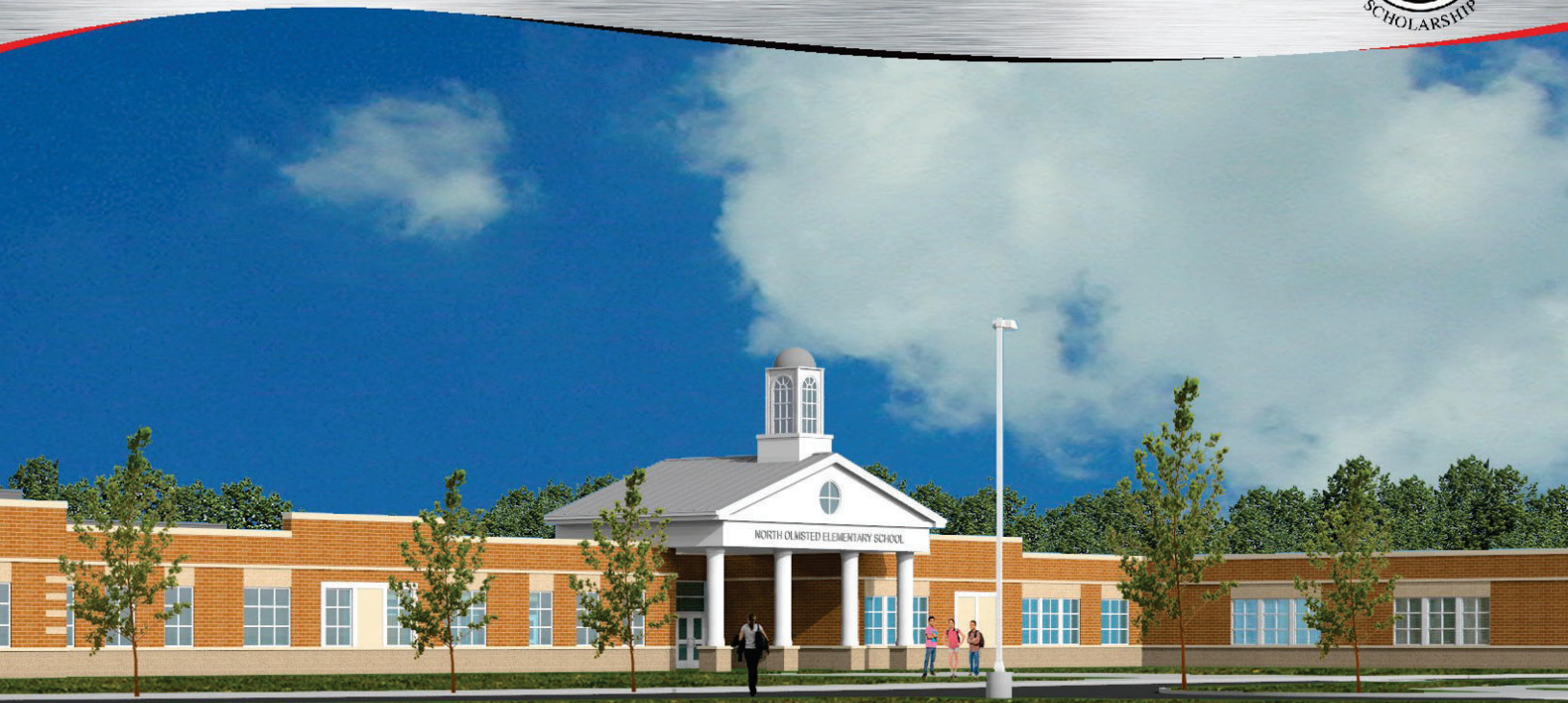
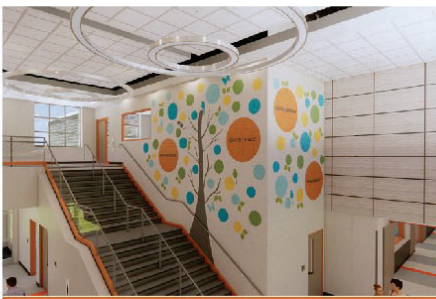


CONSTRUCTION UPDATE

NEW NORTH OLMSTED PK-5 SCHOOL AND RELATED PROJECTS



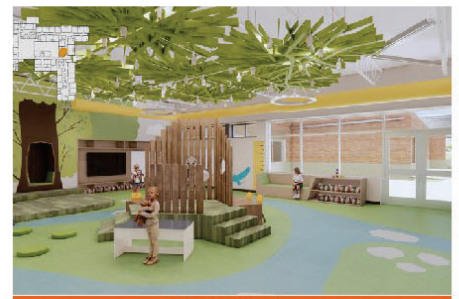
January 2025



Main Entrance



Primary Entrance



Kindergarten ELA



EXPERIENCED • DEPENDABLE • RESOURCEFUL

5802 Akron-Cleveland Road, Hudson, Ohio 44236 • (330) 656-9353





TABLE OF CONTENTS

3	EXECUTIVE SUMMARY
4-8	PROJECT SUMMARY / PHOTOS
9	COST SUMMARY
10-12	CONTINGENCY RECONCILIATION
13-14	CONSTRUCTION SCHEDULE



EXECUTIVE SUMMARY

The project is advancing with key milestones achieved in each area. In Areas A and B, underground plumbing, underground electrical, and stoning for slab on grade are complete and ready for concrete placement once temperatures will allow . CMU bearing walls are in progress under enclosures due to cold weather procedures. Area B also has the elevator pit completed. In Unit C, foundations, below-grade CMU, underground plumbing, and underground electrical are all underway, with work set to continue in these areas. In Unit D, foundations have begun, with upcoming progress focused on completing foundations and starting below-grade CMU. The work remains focused on structural and foundational tasks to maintain alignment with the project schedule.



North Olmsted PK-5

PROJECT SUMMARY

Site Development

January 2025 Progress

- Underground Site Electric– In Progress
- Waterline Piping– Complete
- Light Pole Bases– In Progress
- Temp Power– In Progress

Upcoming Progress

- Natural Gas Piping
- Temp Power
- Permanent Power Preparation
- Light Pole Bases
- Underground Site Electric



PROJECT SUMMARY

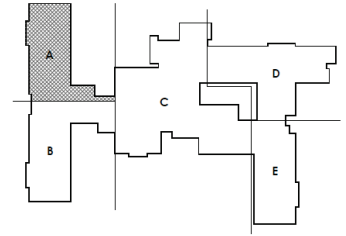
Unit A

January 2025 Progress

- Below Grade CMU– Complete
- Underground Plumbing– Complete
- Underground Electrical– Complete
- CMU Bearing Walls– In Progress
- Stoning for Slab on Grade– Complete

Upcoming Progress

- CMU Bearing Walls



Unit A West Side

PROJECT SUMMARY

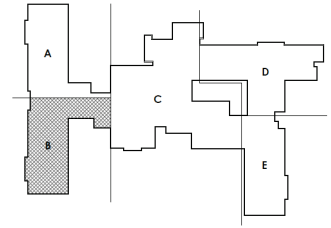
Unit B

January 2025 Progress

- Below Grade CMU– Complete
- Underground Plumbing– Complete
- Underground Electrical– Complete
- CMU Bearing Walls– In Progress
- Stoning for Slab on Grade– Complete
- Elevator Pit– Complete

Upcoming Progress

- CMU Bearing Walls



Elevator Pit



Unit B South Bearing Wall and Stairwell

PROJECT SUMMARY

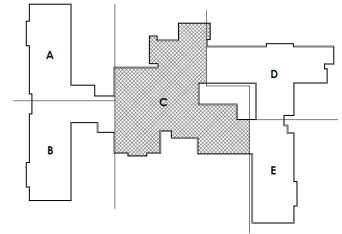
Unit C

January 2025 Progress

- Foundations– In Progress
- Below Grade CMU– In Progress
- Underground Plumbing– In Progress
- Underground Electrical– In Progress

Upcoming Progress

- Foundations
- Underground Plumbing
- Underground Electrical
- Below Grade CMU



Unit C Gym Below Grade CMU West Side



Underground Plumbing Main Corridor

PROJECT SUMMARY

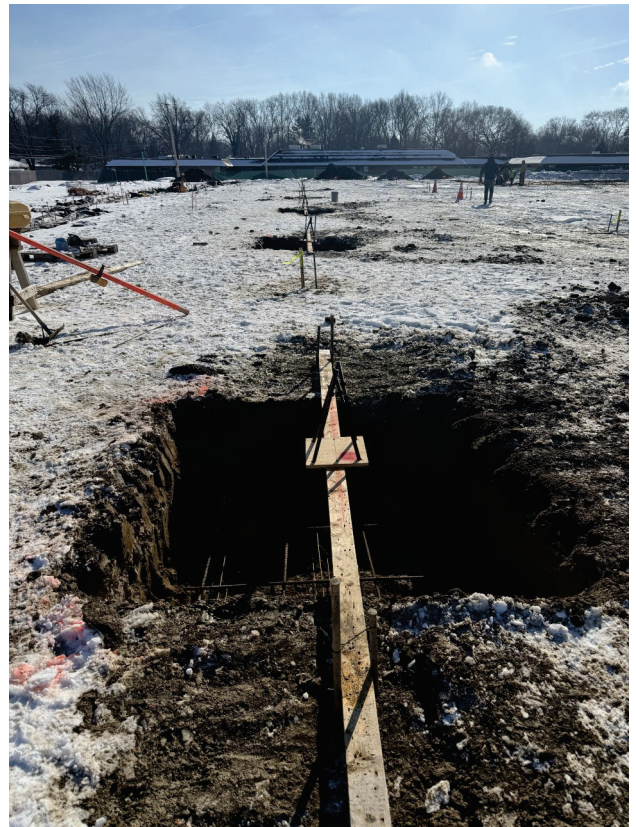
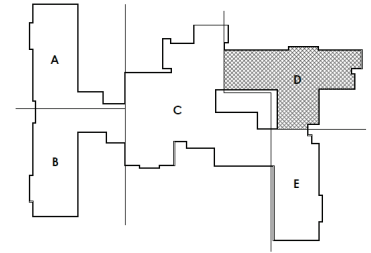
Unit D

January 2025 Progress

- Foundations– In Progress

Upcoming Progress

- Foundations
- Below Grade CMU



Column Pads Main Corridor



Exterior Footers